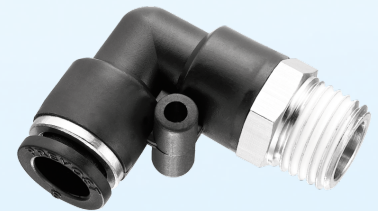


## Codo 90° macho cónico orientable - RPC MR

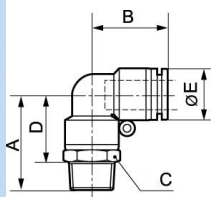


### Características técnicas

**Presión de uso :** 0 a 10 bar

**Temperatura :** 0°C a + 60°C

**Material :** Polímero y latón  
niquelado



A (mm)	B (mm)	C (mm)	D (mm)	E (mm)	Rosca macho BSPT	Para tubo Ø ext. (mm)	Referencia
25	17.5	10	17.5	10	R 1/8	4	RPC MR0400
26.5	17.5	14	17.5	10	R 1/4	4	RPC MR0401
27.5	20.5	12	20	12.8	R 1/8	5	RPC MR0500
29	20.5	14	20	12.8	R 1/4	5	RPC MR0501
31.5	20.5	17	20.5	12.8	R 3/8	5	RPC MR0502
34	20.5	21	21	12.8	R 1/2	5	RPC MR0503
27.5	20.5	12	20	12.8	R 1/8	6	RPC MR0600
29	20.5	14	20	12.8	R 1/4	6	RPC MR0601
31.5	20.5	17	20.5	12.8	R 3/8	6	RPC MR0602
34	20.5	21	21	12.8	R 1/2	6	RPC MR0603
29.5	22.5	14	22	13.8	R 1/8	8	RPC MR0800
31	22.5	14	22	13.8	R 1/4	8	RPC MR0801
33.5	22.5	17	22.5	13.8	R 3/8	8	RPC MR0802
36	22.5	21	23	13.8	R 1/2	8	RPC MR0803
33.2	26.3	17	25.7	16.8	R 1/8	10	RPC MR1000
34.7	26.3	17	25.7	16.8	R 1/4	10	RPC MR1001
36.7	26.3	17	25.7	16.8	R 3/8	10	RPC MR1002
39.2	26.3	21	26.2	16.8	R 1/2	10	RPC MR1003
35.5	27.8	19	26.5	19.8	R 1/4	12	RPC MR1201
38	27.8	19	27	19.8	R 3/8	12	RPC MR1202
40	27.8	21	27	19.8	R 1/2	12	RPC MR1203
40	29.8	22	29	22.7	R 3/8	14	RPC MR1402
42	29.8	22	29	22.7	R 1/2	14	RPC MR1403
41.5	30.8	24	30.5	23.8	R 3/8	16	RPC MR1602

A (mm)	B (mm)	C (mm)	D (mm)	E (mm)	Rosca macho BSPT	Para tubo Ø ext. (mm)	Referencia
43.5	30.8	24	30.5	23.8	R 1/2	16	<b>RPC MR1603</b>